

LANTANA CIVIC PAVILION

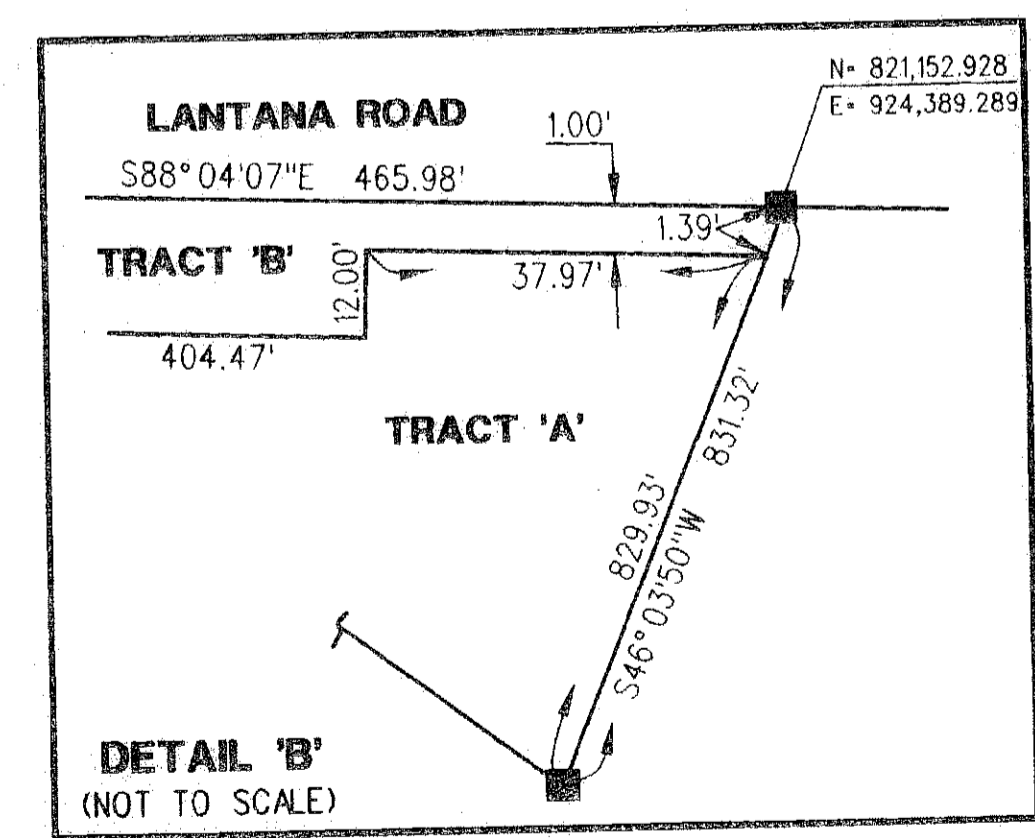
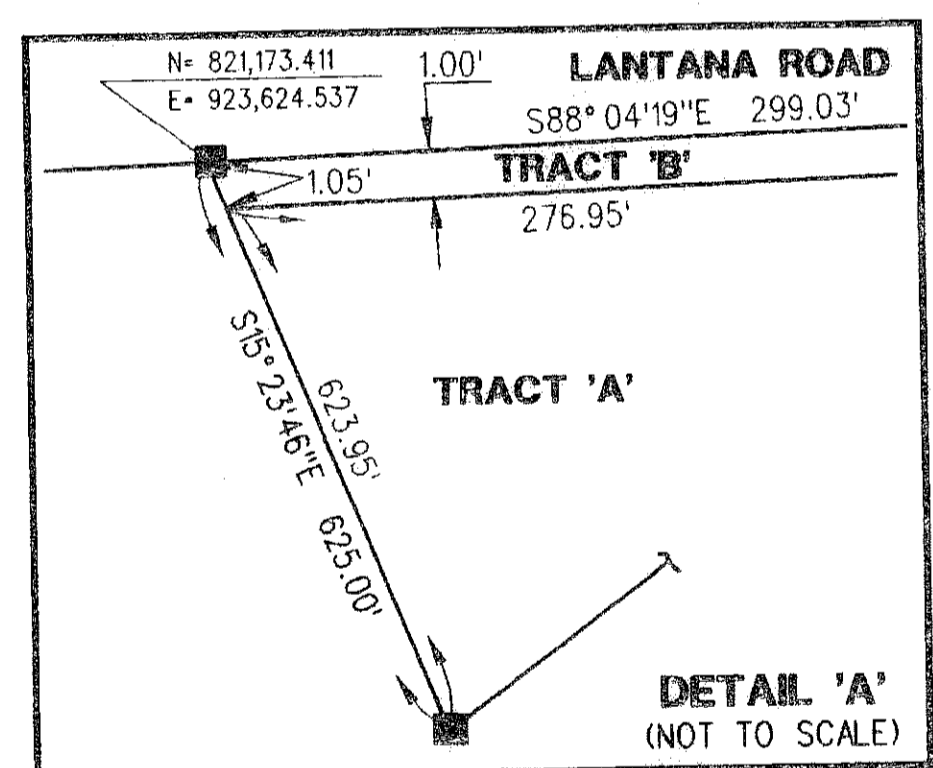
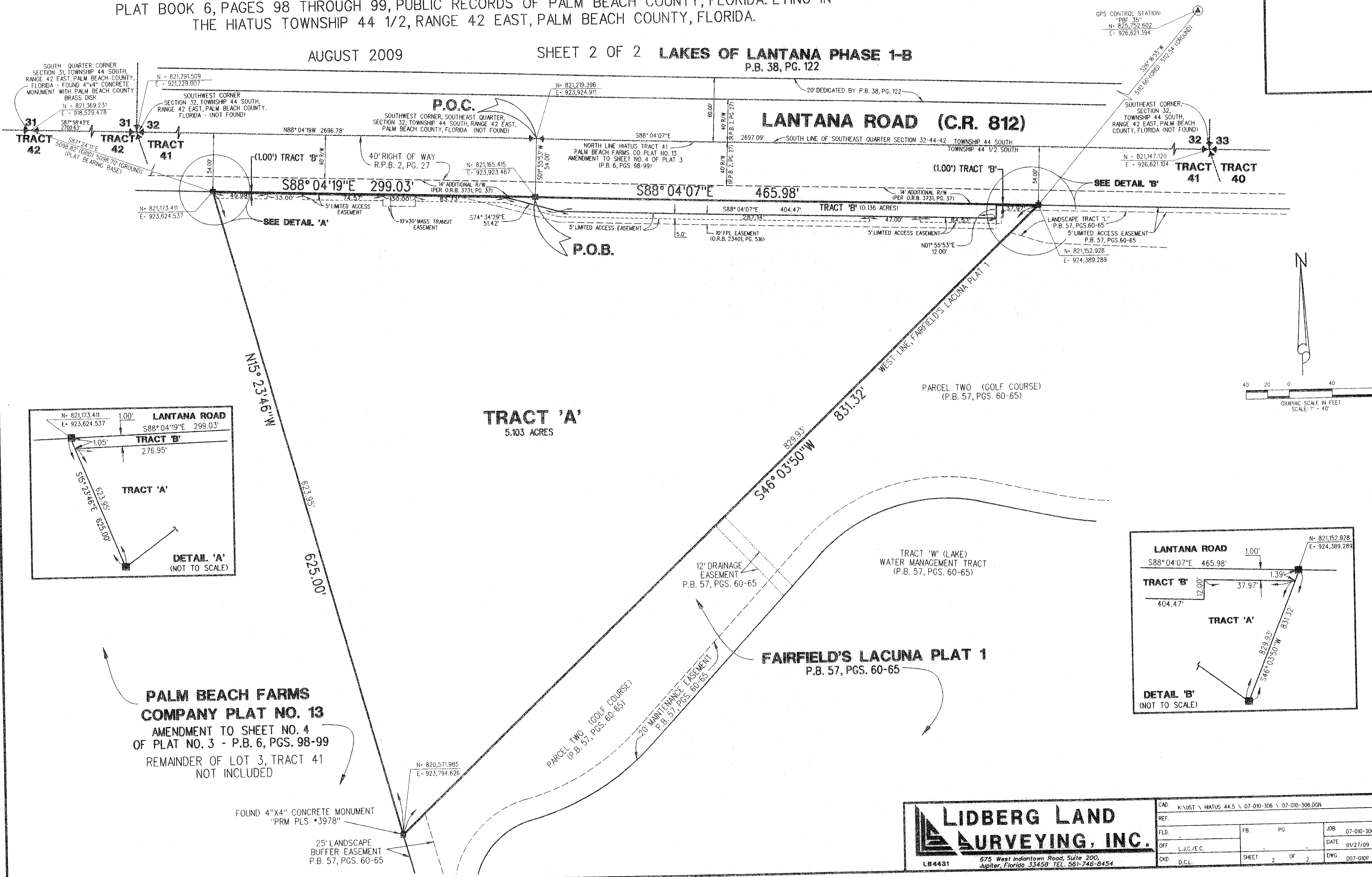
A PART OF BALMORAL COUNTRY CLUB P.U.D.

A PARCEL OF LAND BEING A REPLAT OF A PORTION OF GOVERNMENT LOTS 2 AND 3, TRACT 41, AS SHOWN ON THE PALM BEACH FARMS CO. PLAT NO. 13, AMENDMENT TO SHEET NO. 4 OF PLAT NO. 3, RECORDED IN PLAT BOOK 6, PAGES 98 THROUGH 99, PUBLIC RECORDS OF PALM BEACH COUNTY, FLORIDA. LYING IN THE HIATUS TOWNSHIP 44 1/2, RANGE 42 EAST, PALM BEACH COUNTY, FLORIDA.

14

AUGUST 2009

SHEET 2 OF 2 LAKES OF LANTANA PHASE 1-B
P.B. 38, PG. 122



PALM BEACH FARMS COMPANY PLAT NO. 13
AMENDMENT TO SHEET NO. 4
OF PLAT NO. 3 - P.B. 6, PGS. 98-99
REMAINDER OF LOT 3, TRACT 41
NOT INCLUDED

FOUND 4"X4" CONCRETE MONUMENT
"PRM PLS *3978"
25' LANDSCAPE BUFFER EASEMENT
P.B. 57, PGS. 60-65

LIDBERG LAND SURVEYING, INC.
675 West Indiantown Road, Suite 200,
Jupiter, Florida 33458 TEL. 561-746-8454

CAD	KNUST \ HIATUS 44.5 \ 07-010-306 \ 07-010-306.DGN		
REF.			
FLD.	FB	PG.	JOB 07-010-306
OFF	L.J.C./E.C.		DATE 01/27/09
CKD	D.C.L.	SHEET 2 OF 2	DWG 007-010P